

## 08 / PREMATURE FAILURE IN BEARINGS

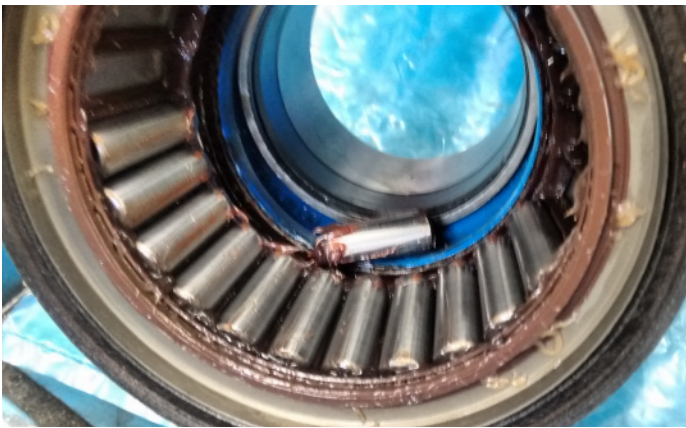
### LACK OF GREASE IN THE BEARING

#### ⊘ CAUSES

- We've not read the manufacturer's instructions.
- We've used the wrong type of grease for the bearing application.
- We haven't used enough grease.

#### ⚠ CONSEQUENCES

- Increase in temperature due to insufficient lubrication.
- Scuffing of the bearing.



## RECOMMENDATION

Using the right amount of lubricant is key to ensuring a long lifespan for the bearing. It's very important that you use the right amount and type of grease for each application.

We recommend reading the manufacturer's instructions to find this out. If you accidentally use the wrong type of grease, with a dropping point not suitable for the requirements of the application, you'll almost definitely end up with a bearing failure.