

## 07 / PREMATURE FAILURE IN BEARINGS

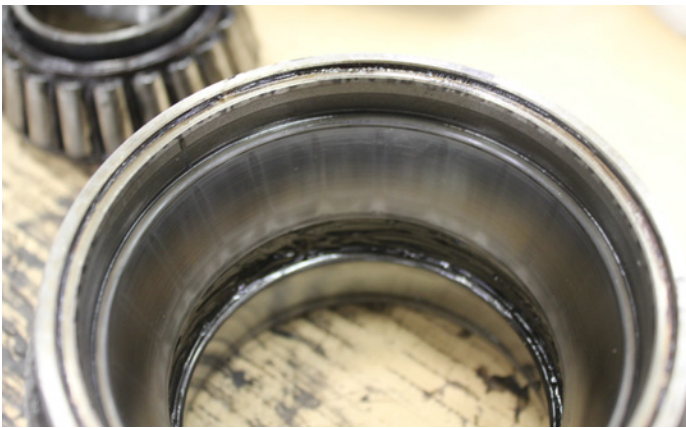
BEARING INSTALLED WITH POOR TIGHTENING TORQUE (AXIAL PLAY, OVER CLEARANCE)

### ⊘ CAUSES

- The bearing was tightened poorly and below the manufacturer's specified torque.

### ⚠ CONSEQUENCES

- Bearing noise and vibration.
- On free spin, the rollers hit the race and cone.
- As the bearing moves through its housing, the seals move and grease is lost.
- Without lubrication, the bearing overheats, which will eventually lead to bearing seizure and total failure.



## RECOMMENDATION

Always comply with the manufacturer's specifications and use the right tool to adjust the proper tightening torque. We recommend always using a torque wrench.

Using an inadequate tool can damage the bearing and compromise vehicle safety.

After each installation, check for wheel play.