

06 / PREMATURE FAILURE IN BEARINGS

BEARING INSTALLED WITH EXCESSIVE TORQUE (NO AXIAL CLEARANCE)

⊘ CAUSES

- The bearing was over tightened failing to comply with manufacturer's specs. This is often due to using the wrong tool for the job, such as an impact gun.

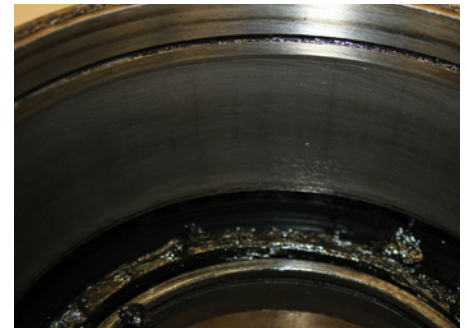
⚠ CONSEQUENCES

- The bearing overheats, causing the grease to liquefy and escape through the seals (F1), thus losing lubrication which can lead to bearing seizure and total failure.
- Discoloring of bearing races resulting from high temperatures. (F2)

(F1)



(F2)



RECOMMENDATION

Always comply with the manufacturer's specifications. We always recommend using a torque wrench, since it allows you to control tightening torque.

Using an inadequate tool can damage the bearing and compromise vehicle safety.

