

02 / PREMATURE FAILURE IN BEARINGS

INSTALLATION OF THE SEAL WITH UNSUITABLE TOOLS (WITHOUT THE FERSA MOUNTING TOOLS)

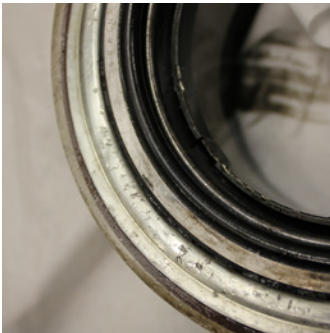
⊘ CAUSES

- We mounted the seals with a hammer, damaging it and endangering the sealing of the bearing. (F1)

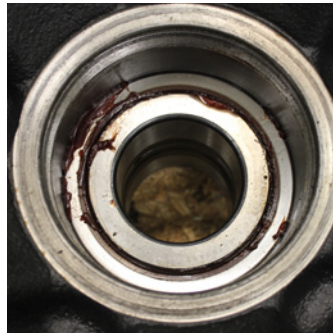
⚠ CONSEQUENCES

- Premature loss of grease by misalignment (F2).
- We might have installed the seals misaligned, coming to nail them in the cage, breaking it and damaging the seal (F3).
- If you do not solve the above problem, there will be a bearing seizure due to the loss of all lubrication. (F4).

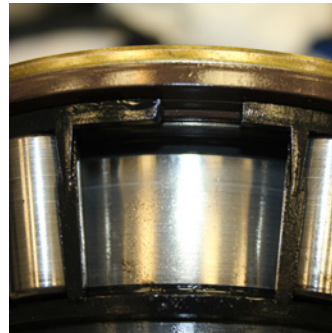
(F1)



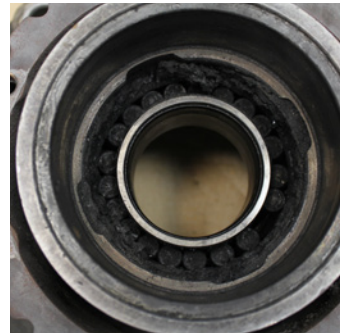
(F2)



(F3)



(F4)



RECOMMENDATION

Fersa mounting tools are specially designed to not damage the seal during assembly and are adapted to both the Inboard and the Outboard side of the bearing.

Read the instructions for the correct use.